



GAT MONTHLY MEMBERSHIP PROGRESS REPORT

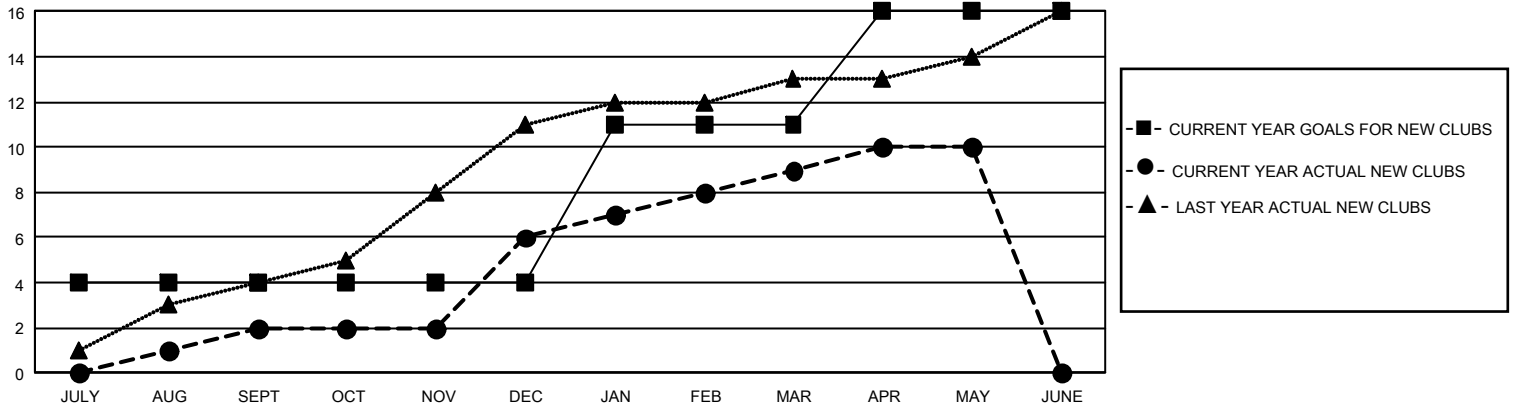
Results as of: 5/31/2025

GMT Constitutional Area 8, Group D

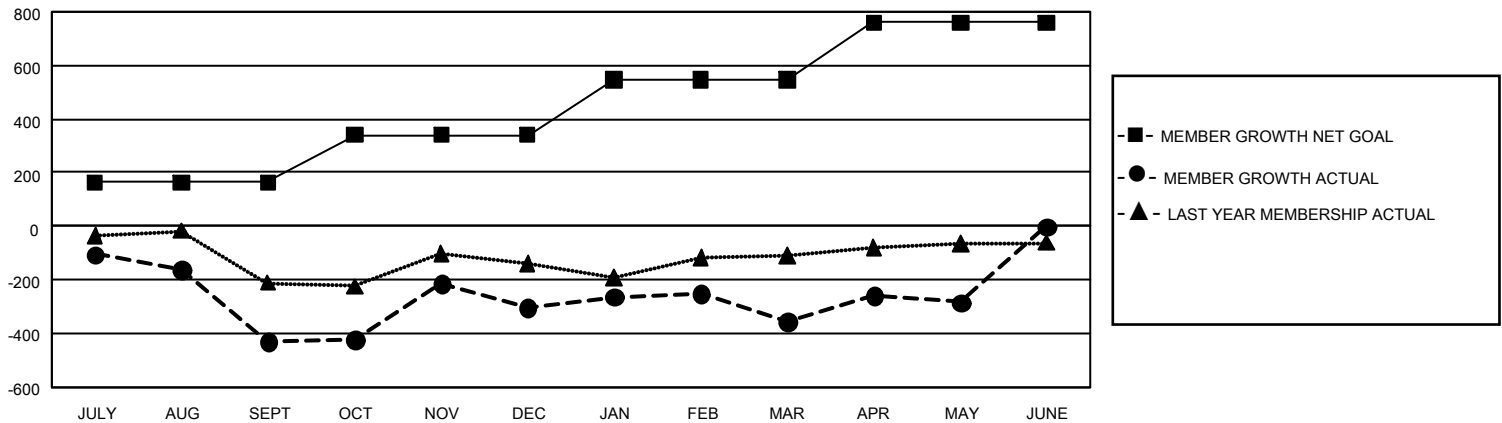
REPORT DOES NOT INCLUDE CLUBS IN UNDISTRICTED AREAS.

Clubs				Members			
RESULTS FOR 2024-2025				RESULTS FOR 2024-2025			
QUARTER	NEW CLUB GOAL	NEW CLUBS	DROPPED CLUBS	QUARTER	MEMBER GROWTH NET GOAL	MEMBER GROWTH ACTUAL	DROPPED MEMBERS ACTUAL (including transfers)
JULY/AUG/SEPT	12	2	3	JULY/AUG/SEPT	163	223	619
OCT/NOV/DEC	0	4	10	OCT/NOV/DEC	178	602	429
JAN/FEB/MAR	21	3	2	JAN/FEB/MAR	206	300	304
APR/MAY/JUNE	15	1	1	APR/MAY/JUNE	214	225	126

GOALS AND ACTUAL NEW CLUBS CUMULATIVE



GOALS AND ACTUAL MEMBERS CUMULATIVE



DROPPED CLUBS: 16

106 CLUBS OF 198 ADDED 1 OR MORE NEW MEMBERS

GENDER DISTRIBUTION

MALE	1,504 (38.25%)
FEMALE	2,426 (61.70%)
NON BINARY	1 (0.03%)
PREFER NOT TO ANSWER	1 (0.03%)

DROPPED MEMBERS

DECEASED	10
CLUB CANCELLED	302
OTHER	1,160
TOTAL	1,472

[CLICK HERE FOR CUMULATIVE MEMBERSHIP DATA](#)

TOTAL FAMILY UNIT MEMBERS	506
FAMILY MEMBERS PAYING HALF DUES	294